



Agenda for Delaware Continuity Coordinator Council

November 18, 2020

Minutes

Attendees: Charlene Adams, Sandra Alexander, Mindy Anthony Marian Bate, Nikko Brady, Mike Bilder, Vanessa Briddell, Dan Cahall, Timothy Collins, Cherie Dodge-Biron Bob Dreibelbis, Mark Dworkin, Ebony Edwards, Johna Esposito, Alfred C Finch Jr., Christine Gannon, Lori Gorman, Kimberly Gould, Christopher Hall, Jay Harter, Sandra Hitchens, Mark Hogan, Dawn Hollinger, Alyssa Huenke, Carrie Hyla, Samara Kaminski, John Kelley, Christopher M Klein, Andy Kloepper, Peter Korolyk, Tony Lee, Tim Li, Theora Lowe-Staton, John Mancus, Anthony Manson, Brenda Mayrack, Brian Manubay, Sharon Maurer, Chris McGonigle, Eric Mease, Sharon Miller, Ramona Monsen, Faith Mwaura, Kim Newell, Gregory Nolt, Jerome Passon, Louis Pettigrew, Coleen Ponden, Leslie Poland, Lori Reeder, Janet Roberson, Antoinette Russum-Hane, Jennifer Simpson, Elizabeth Sloven, Syd Swann, Alexis Teitelbaum, Doyle Tiller, Terri Timmons, Victor Ting, Mickie, Troubetaris, Heather Volkomer, Lorri Wall, Jen Walls, Ryan Ward, Paul Weagraff, Arielle Winston, Dana Wise, Jessica Wurzel, Denise Zielinski, Matt Zolper,

➤ **Welcome/Introductions**

➤ **DECCC Updates**

- ❖ New Plan Builders & Kudos
- ❖ Upcoming Opportunities
- ❖ COOP News
 - DECCC Steering Committee elections
 - 2021 Goals and meeting topics
 - Crisis Communication Changes
 - Recap of Secure Delaware
 - BCIC Dictionary Clean up

➤ **Winter Weather preparedness in the age of COVID-19**

Tony Lee, Delaware Emergency Management

With 2021 still two months away, who knows what this year will throw at us next. With the hurricane season ending and winter right around the corner, hear from Tony about the new thoughts concerning handling COOP responses to Weather events during the age of COVID-19.

➤ **Statewide COVID AAR Lessons Learned Discussion**

Round Table Discussion

A review of some of the key lessons learned that were identified on agency AAR submissions. Open discussion among organizations on changes that they are making as a result of this incident.

DECCC Steering Committee members:

Tony Lee – Co-Chair

Lori Gorman – Co-Chair

Vacant- Vice-Chair

Dawn Hollinger- Education & Training

John Mancus – Disaster Preparedness Officer

Dan Cahall- IT Systems Officer

Tim Li- Vital Records Officer

DECCC Steering Committee members:

Tony Lee – Co-Chair

Lori Gorman – Co-Chair


Vacant- Vice-Chair

Dawn Hollinger- Education & Training

John Mancus – Disaster Preparedness Officer

Dan Cahall- IT Systems Officer

Tim Li- Vital Records Officer



Delaware Continuity Coordinator Council (DECCC)

4th Quarter Meeting

November 18, 2020

1

Agenda

- **Welcome/Introductions**
- **DECC Updates**
 - New plan builders
 - Upcoming Opportunities
 - COOP News
- **Winter Weather Preparedness in Age of COVID-19**
 - FEMA special guest:
 - Tony Lee, DEMA
- **Statewide COVID AAR Lessons Learned**
 - Common Lessons Learned
 - Unique observations
 - Round Table Discussion

2

DECCC Updates

- ▶ **Roll Call – New Plan Builders**
 - Stacey Hofmann– Agriculture
 - Cynthia Fairwell– DOL Vocational Rehabilitation
 - Ramona Monsen– Court of Chancery
 - Sarah Denison– Government Information Center
 - Shawn Foster– Public Health
 - Lorri Wall– Public Health
 - Shawn Heyward– DHSS, Social Services

3

Upcoming Opportunities

Pre100– Active Shooter Exercise Development
<https://teex.org/class/PRE100/>

DEMA Training:
<https://dema.delaware.gov/training/dema/index.shtml?dc=demaTrainingCalendar>

- ▶ FEMA Training (online)
<https://training.fema.gov/>

4

COOP News

- ▶ **DECCC Steering Committee Elections**
 - Co-Chair:** Tony Lee
 - Co-Chair:** Lori Gorman
 - IT Systems Officer:** Dan Cahall
 - Education & Training:** Dawn Hollinger
 - Disaster Preparedness Officer:** John Mancus
 - Vital Records Officer:** Tim Li
- ▶ **Call for Volunteers/ Elections**
 - Cherie Dodge-Byron
 - Leslie Poland
 - Vanessa Briddell

5

COOP News

- ▶ **2020 Goals and Meeting Topics**
 - **Re-draft Charter and By-laws**
 - By-laws were reviewed and revised, these have been submitted to DEMA's DAG for review
 - **Increase quarterly meeting attendance**
 - Success; each meeting has increased by at least 5 people
 - **Provide one role specific presentation each quarter**
 - Success
 - **Support Statewide COOP Exercise**
 - Success: August 11, 2020

6

COOP News

- ▶ 2021 Goals and Meeting Topics
 - Charter and By-laws
 - Increase quarterly meeting attendance by 5 people per meeting
 - Provide one role specific presentation each quarter
 - Support Statewide COOP Exercise

7

COOP News

- ▶ 2021 Meeting Ideas
 - Present updated Charter to membership
 - Connecting DR to COOP- bring your IT/ CES people with you to the meeting- discuss COOP IT issues
 - Human Resources feedback
 - Invite other state representative to speak- either play webinar or get live speaker
 - COOP changes as a result of COVID

8

COOP News

- ▶ Crisis Communication Changes

MIR3 has been undergoing an upgrade to their systems that will result in a change to their web address. This is an ongoing process and will be thoroughly tested before coming live. Once this has occurred, we will be sending out a notice to request you all update any web favorites, references, etc. for the new updated link.

9

COOP News

- ▶ Office365

For those organizations that have moved over to O365, the **SOFTWARE** needs in your COOP plan have changed. Where previously Word, Excel, etc. have been listed as software requirements, these are now covered under the **APPLICATION** O365. The O365 application should be linked to the actual processes that depend on it.

10

COOP News

- ▶ Secure Delaware

On October 27th we held our annual Cyber Security Conference. This was the first year we held the conference virtually. Over 300 people attended the conference with over 400 registered. All of the presentations were recorded and can be viewed at <https://digiknow.dti.delaware.gov/pages/cyber-workshop/2020/>

11

COOP News

- ▶ BCIC Dictionary Clean-up

Over the next Month, DTI will be conducting updates to clean-up the following dictionaries in BCIC. Please take a minute to ensure that you have removed any un-necessary links in your existing plans

- Processes
- Customer/Partners
- Teams
- Software
- Assets
- Supplies

12

- ▶ [Winter Weather Preparedness in the Age of COVID-19](#)
- ▶ [Statewide COVID Lessons Learned Discussion](#)

13

Thank you and
see you next year!

14

2020 Atlantic Season Wrap-Up

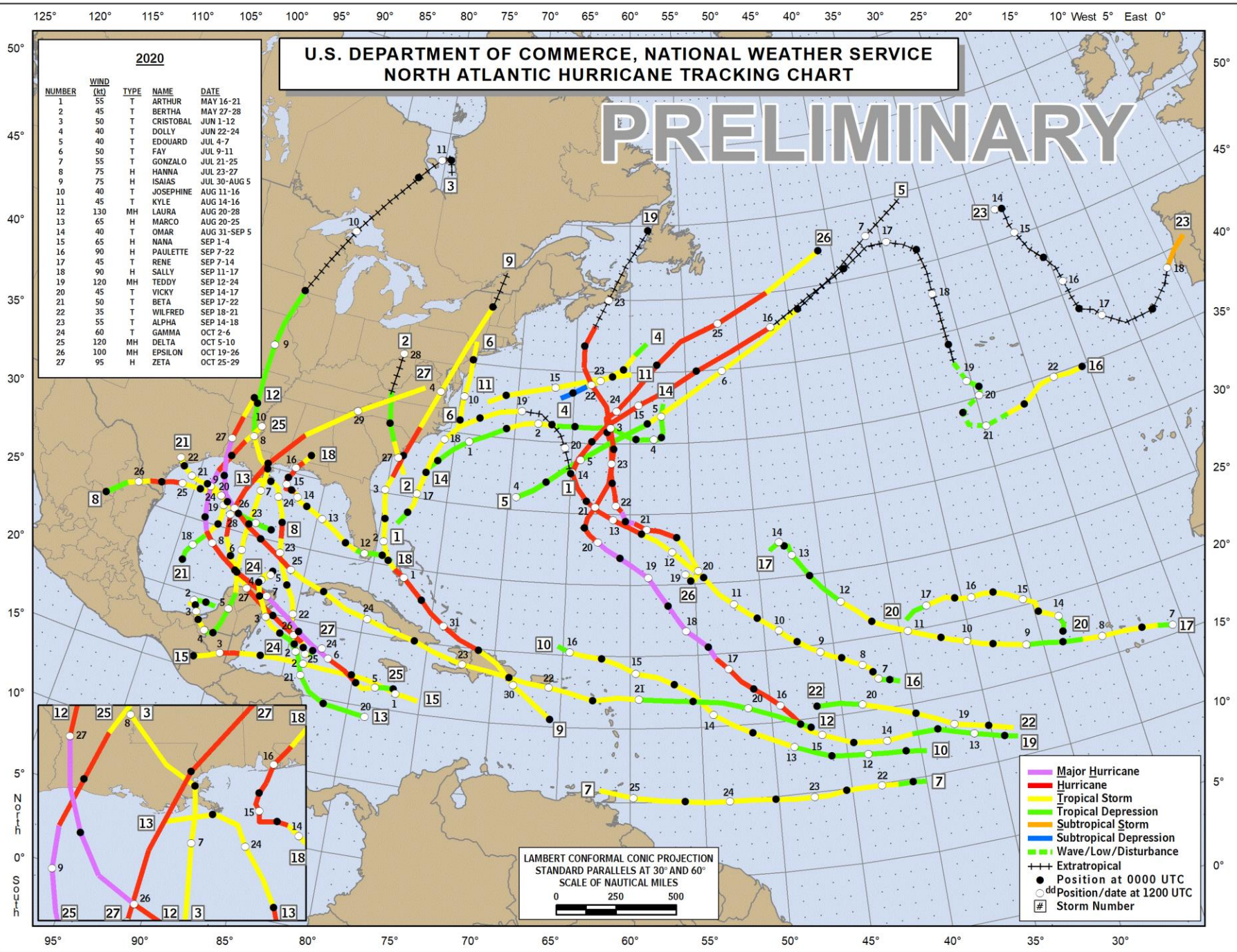
Mike Bilder

Hurricane Program Manager / HLT Lead

Region 3



FEMA



Note: this graphic does not yet include Eta, Theta, and Iota.



2020 Atlantic Tropical Cyclone Names*

Tropical Storm	Arthur	May 16	Hurricane	Hanna	July 22	Tropical Storm	Omar	Sept 1
Tropical Storm	Bertha	May 27	Hurricane	Isaias	July 29	Hurricane	Paulette	Sept 7
Tropical Storm	Cristobal	June 2	Tropical Storm	Josephine	Aug 13	Tropical Storm	Rene	Sept 7
Tropical Storm	Dolly	June 23	Tropical Storm	Kyle	Aug 14	Hurricane	Sally	Sept 12
Tropical Storm	Edouard	July 5	Hurricane	Laura	Aug 21	Hurricane	Teddy	Sept 14
Tropical Storm	Fay	July 9	Hurricane	Marco	Aug 21	Tropical Storm	Vicky	Sept 14
Tropical Storm	Gonzalo	July 22	Hurricane	Nana	Sept 1	Tropical Storm	Wilfred	Sept 18

*Names provided by the World Meteorological Organization

Be prepared: Visit hurricanes.gov and follow @NWS and @NHC_Atlantic on Twitter.



2020 Greek Alphabet Tropical Cyclone Names


(As of Nov 16)

Subtropical Storm	Alpha	Sept 18	Hurricane	Iota	Nov 13	Rho
Tropical Storm	Beta	Sept 18		Kappa		Sigma
Tropical Storm	Gamma	Oct 2		Lambda		Tau
Hurricane	Delta	Oct 5		Mu		Upsilon
Hurricane	Epsilon	Oct 19		Nu		Phi
Hurricane	Zeta	Oct 25		Xi		Chi
Hurricane	Eta	Oct 31		Omicron		Psi
Tropical Storm	Theta	Nov 10		Pi		Omega

+ 1 Tropical Depression (TD 10)

NOAA Hurricane Season Outlook

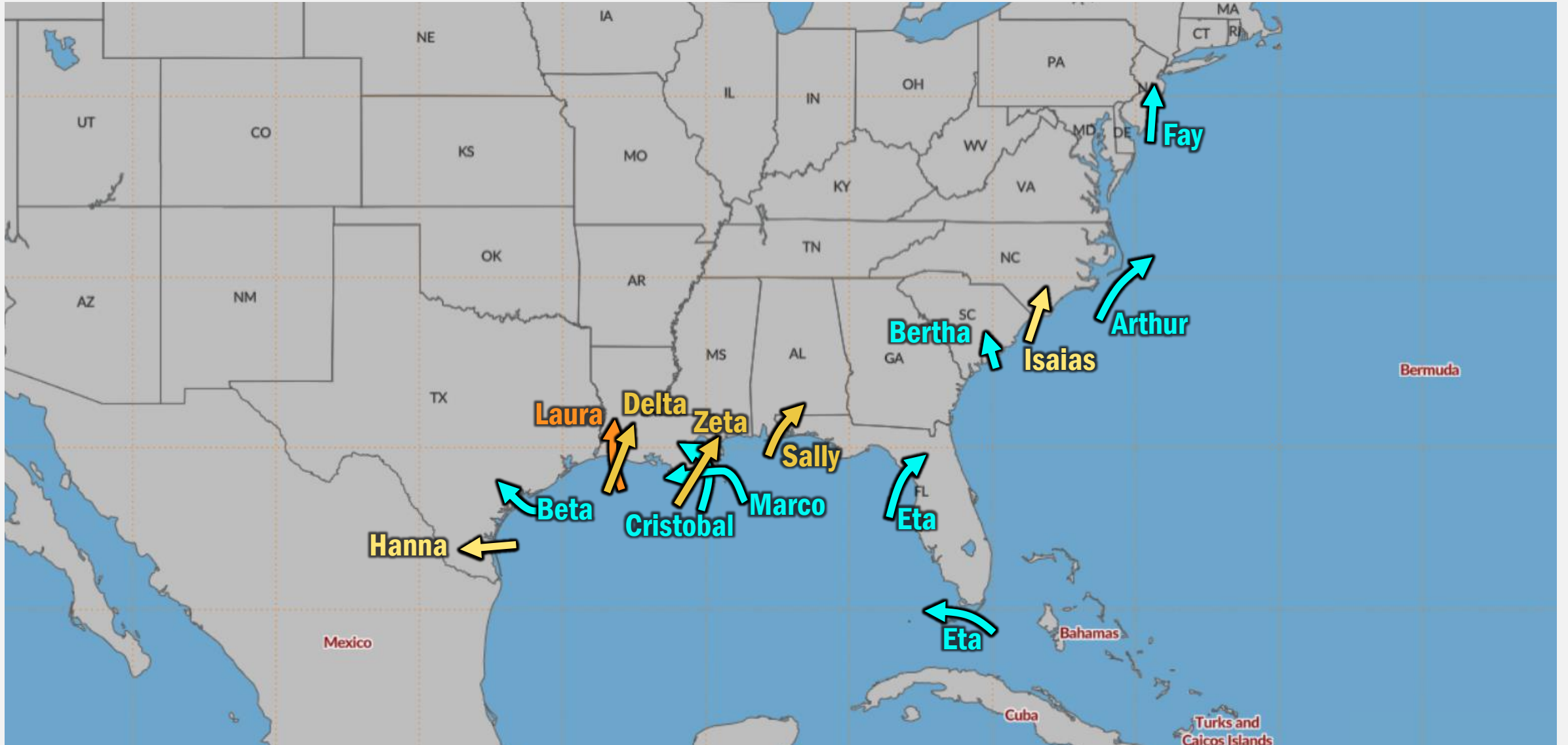
ATLANTIC OUTLOOK

ATLANTIC 	AVERAGE	MAY OUTLOOK	AUG OUTLOOK	ACTUAL*
NAMED STORMS	12	13-19	19-25	30
HURRICANES	6	6-10	7-11	13
MAJOR HURRICANES	3	3-6	3-6	6

*through November 16

2020 Atlantic Hurricane Season

CONUS LANDFALLS/IMPACTS

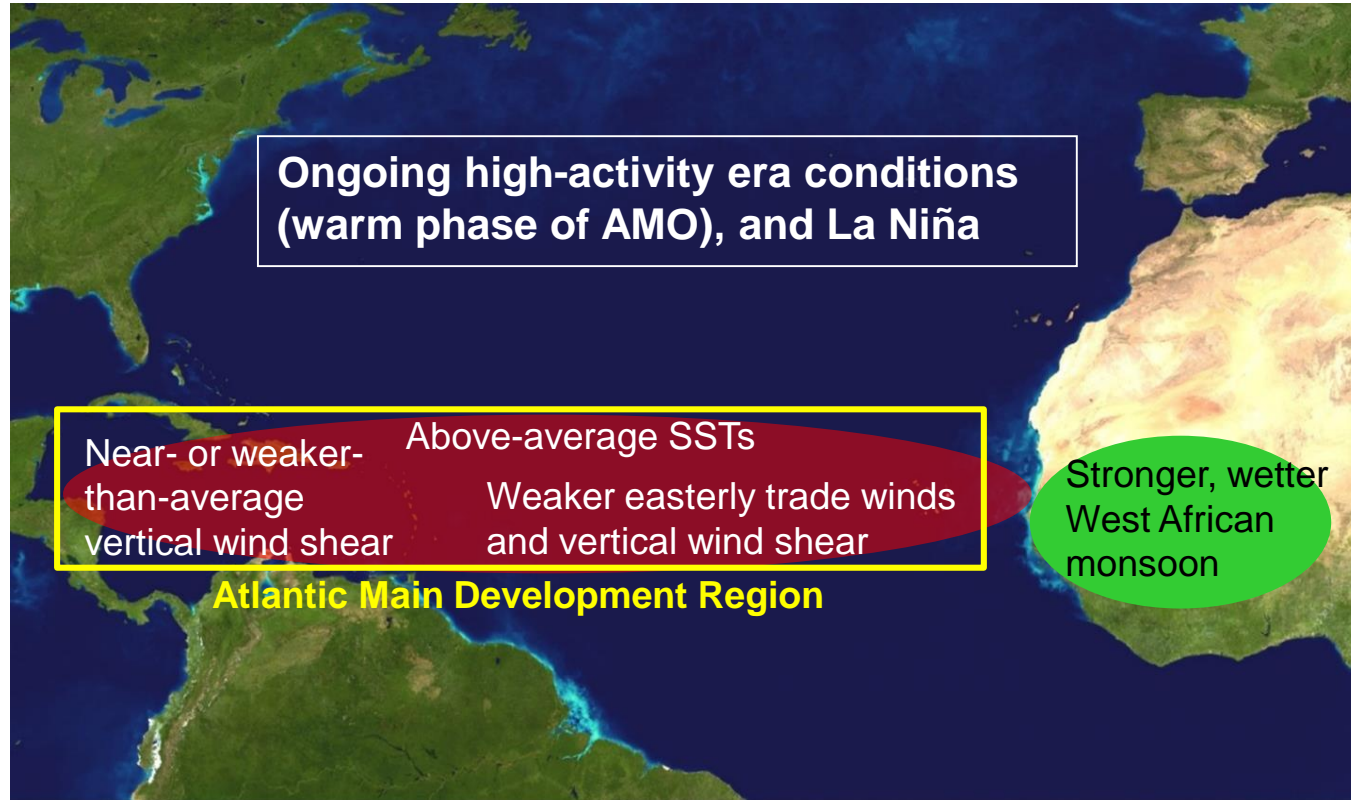


Historic Year

- Traditional Atlantic season ends on Nov. 30, but tropical cyclones are possible in December.
- 2020 is the most hyperactive season on record, with 31 tropical cyclones (30 of which were named storms). 2nd most number of hurricanes (13), which trails 2005 by 2.
 - It's only the 2nd season in which NHC had to resort to the Greek alphabet for storm names (2005 was the other time it happened).
- Several formation timing records were broken this year.
- 12 named storms made landfall in CONUS – most on record.
- 6th most Accumulated Cyclonic Energy (ACE) generated in a single Atlantic season.
 - The Greek alphabet storms alone generated enough ACE to meet the average ACE of a normal Atlantic season (66-111 ACE).
 - 2nd most ACE generated in November in the Atlantic (most since 1932). Most number of Major Hurricanes to form in November.
- Latest Cat 5 hurricane in the Atlantic (Iota).



Environmental Factors that fueled the 2020 Atlantic Season

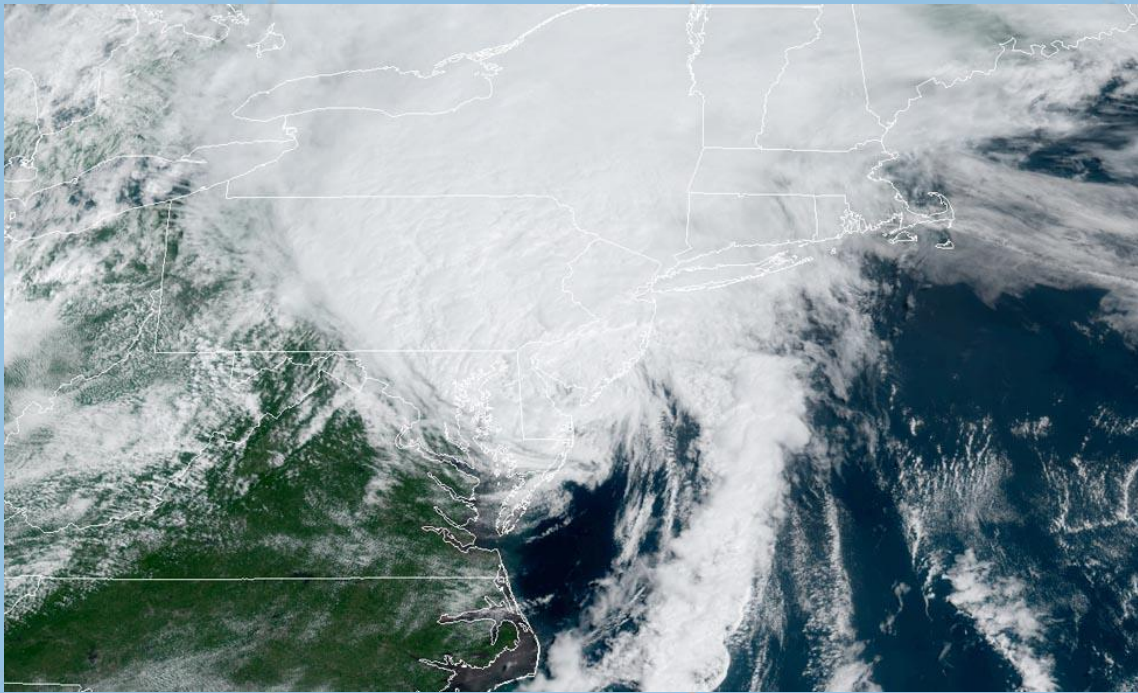
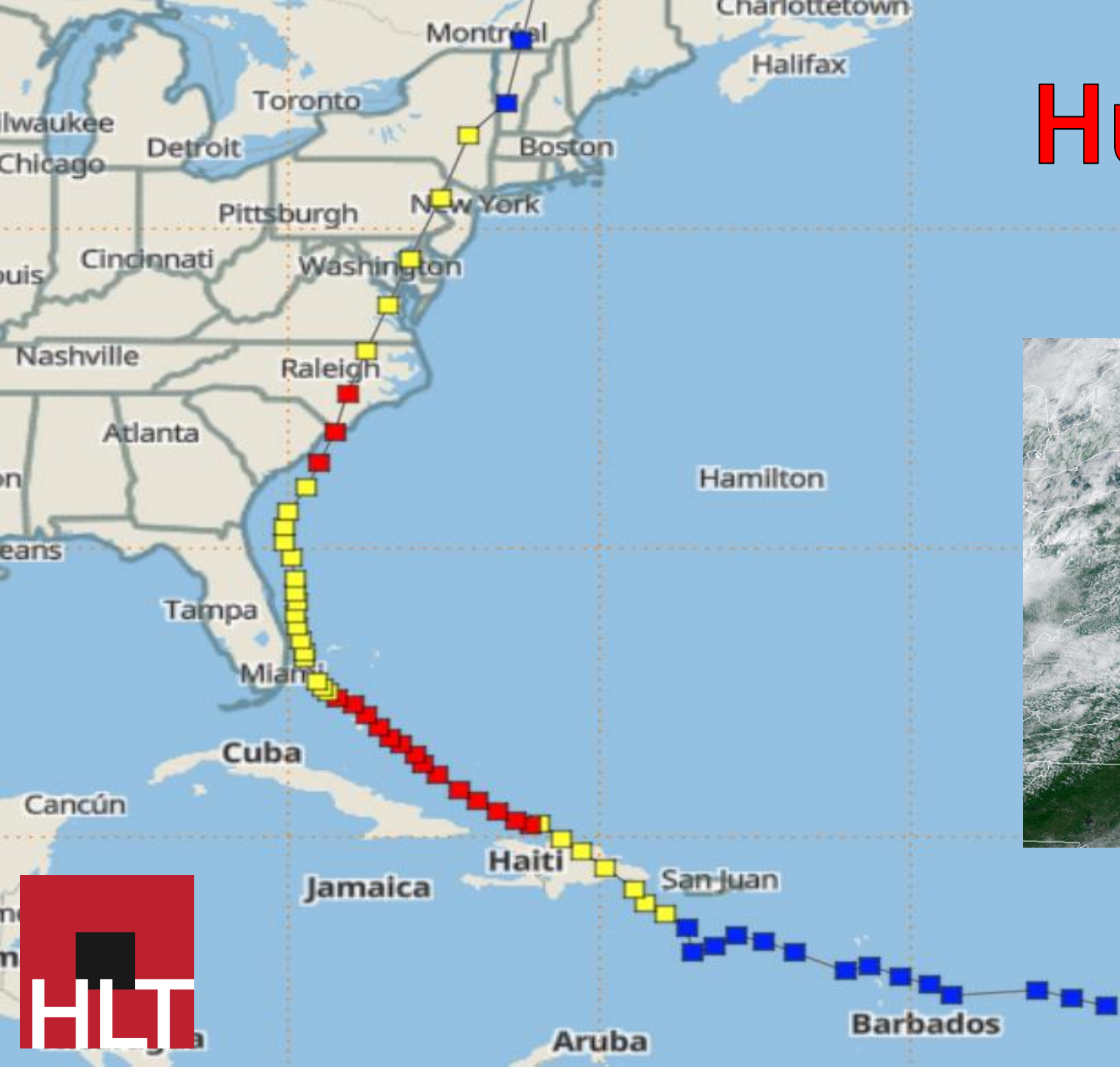


1. Ongoing high-activity era conditions favor more hurricane activity. These conditions include above-average sea surface temperatures in the Main Development Region, along with
2. Weaker trade winds, weaker vertical wind shear, and a stronger, wetter west African monsoon.
3. El Niño was not expected; in fact, La Niña is occurring, meaning either no suppression of, or a reinforcement of, the high-activity era conditions.

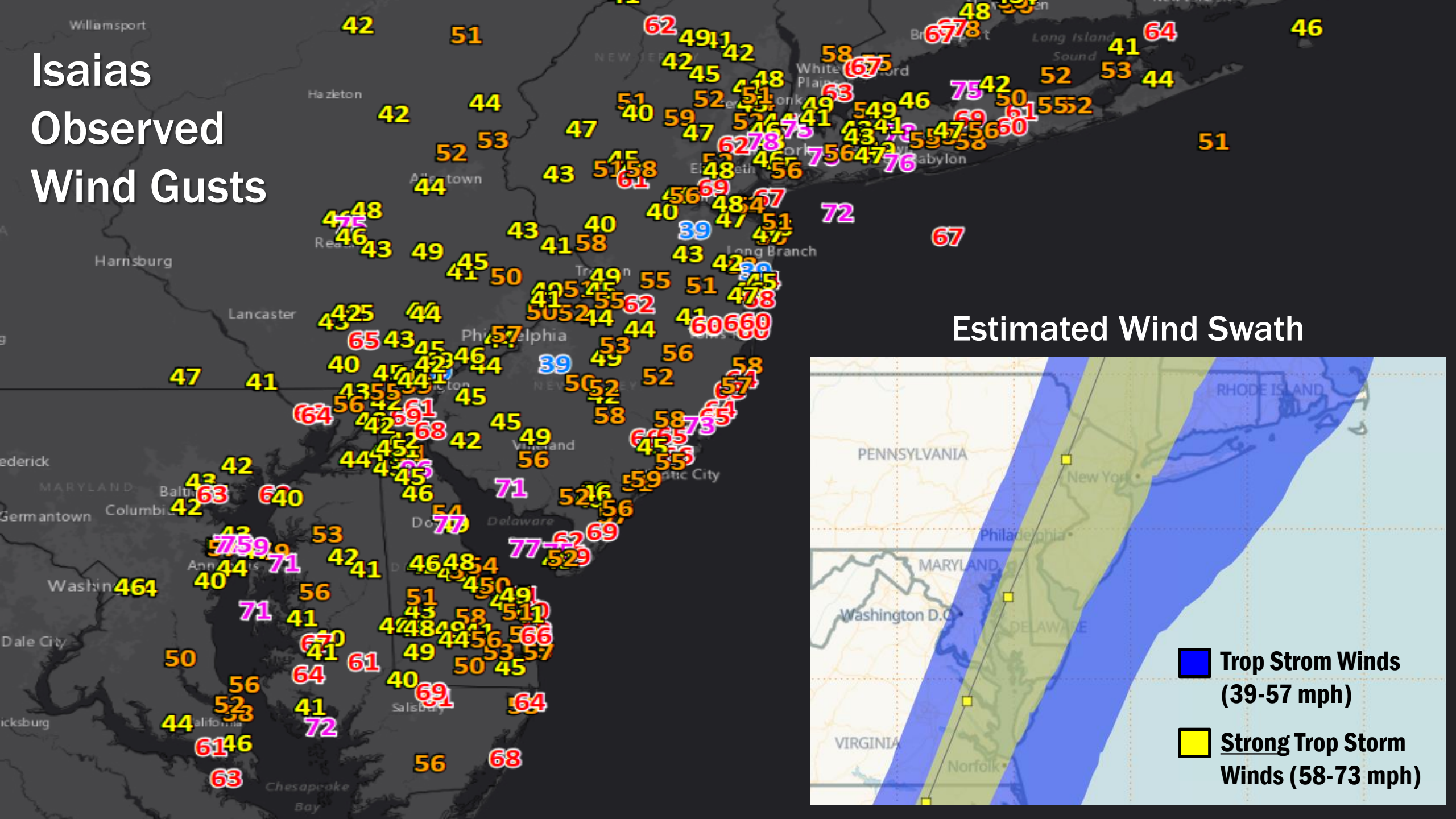


Hurricane Isaias

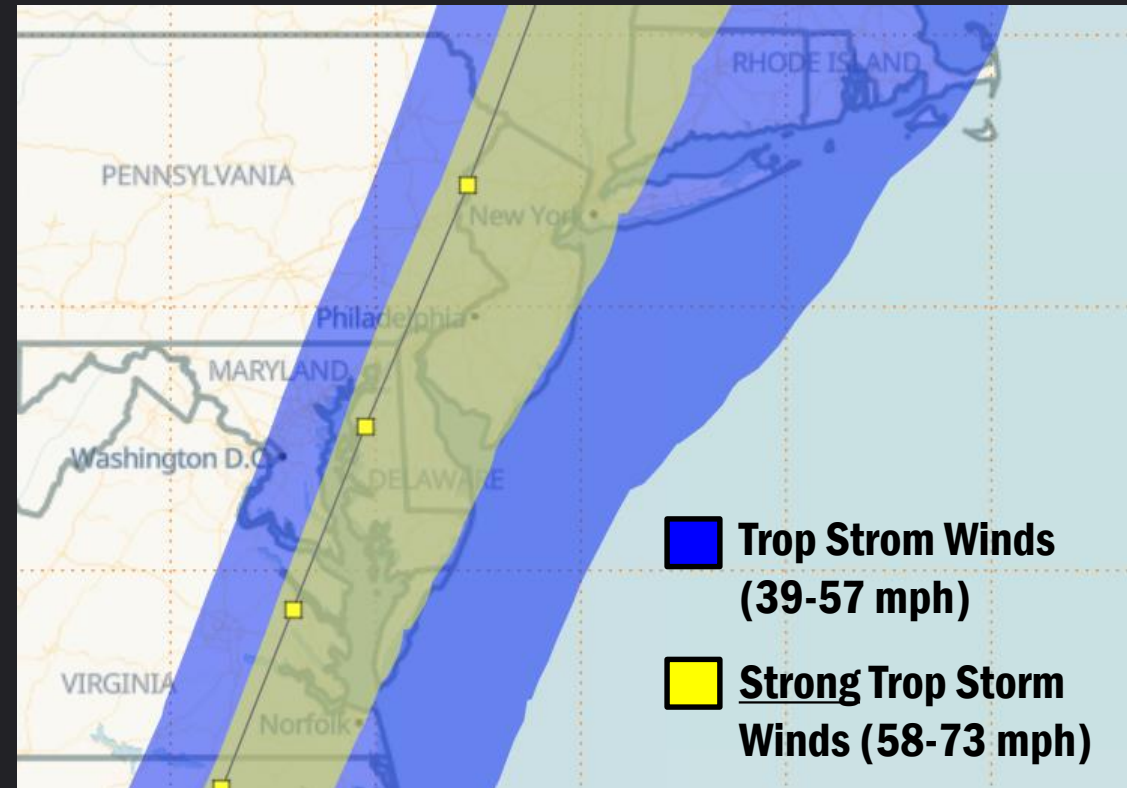
Jul. 28 - Aug. 5, 2020



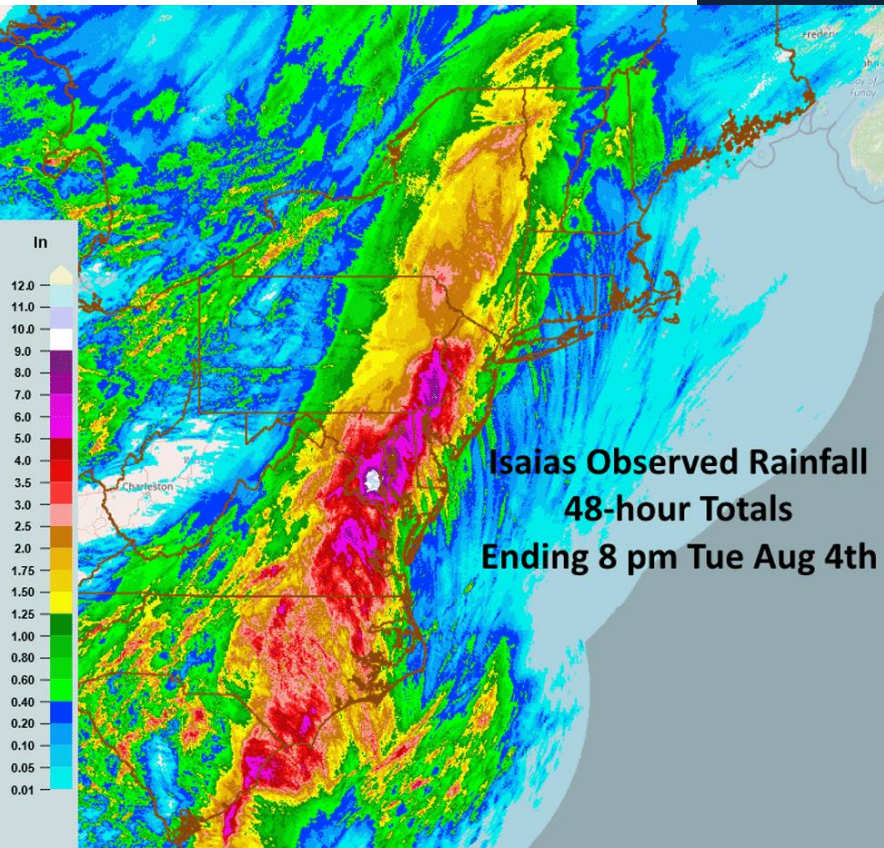
Isaias Observed Wind Gusts



Estimated Wind Swath



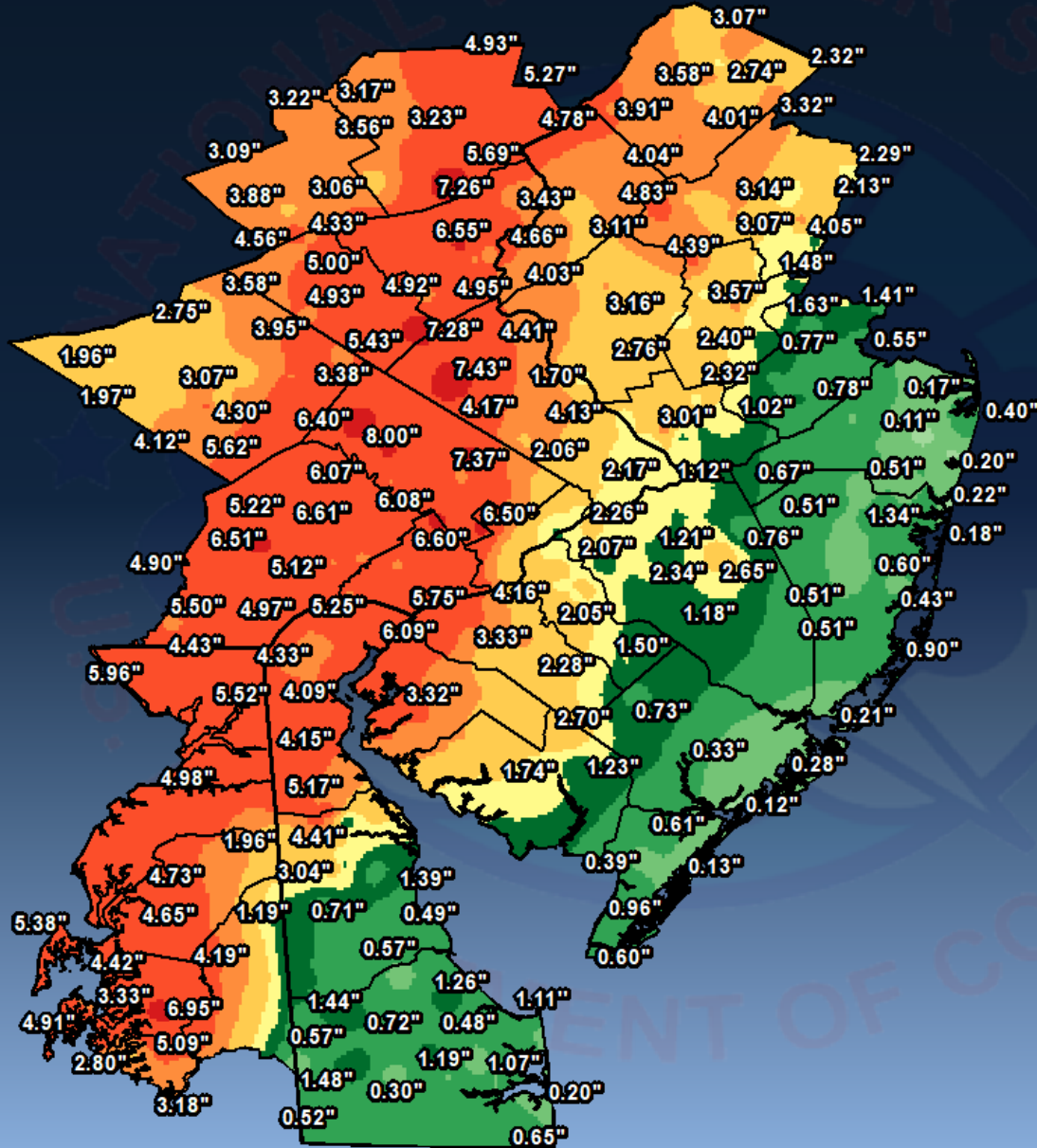
Isaias Observed Rainfall (Storm Total)



National Weather Service Mount Holly/Philadelphia

Tropical Storm Isaias Preliminary Storm Total Rainfall

Analysis Data Source: Regional Observations

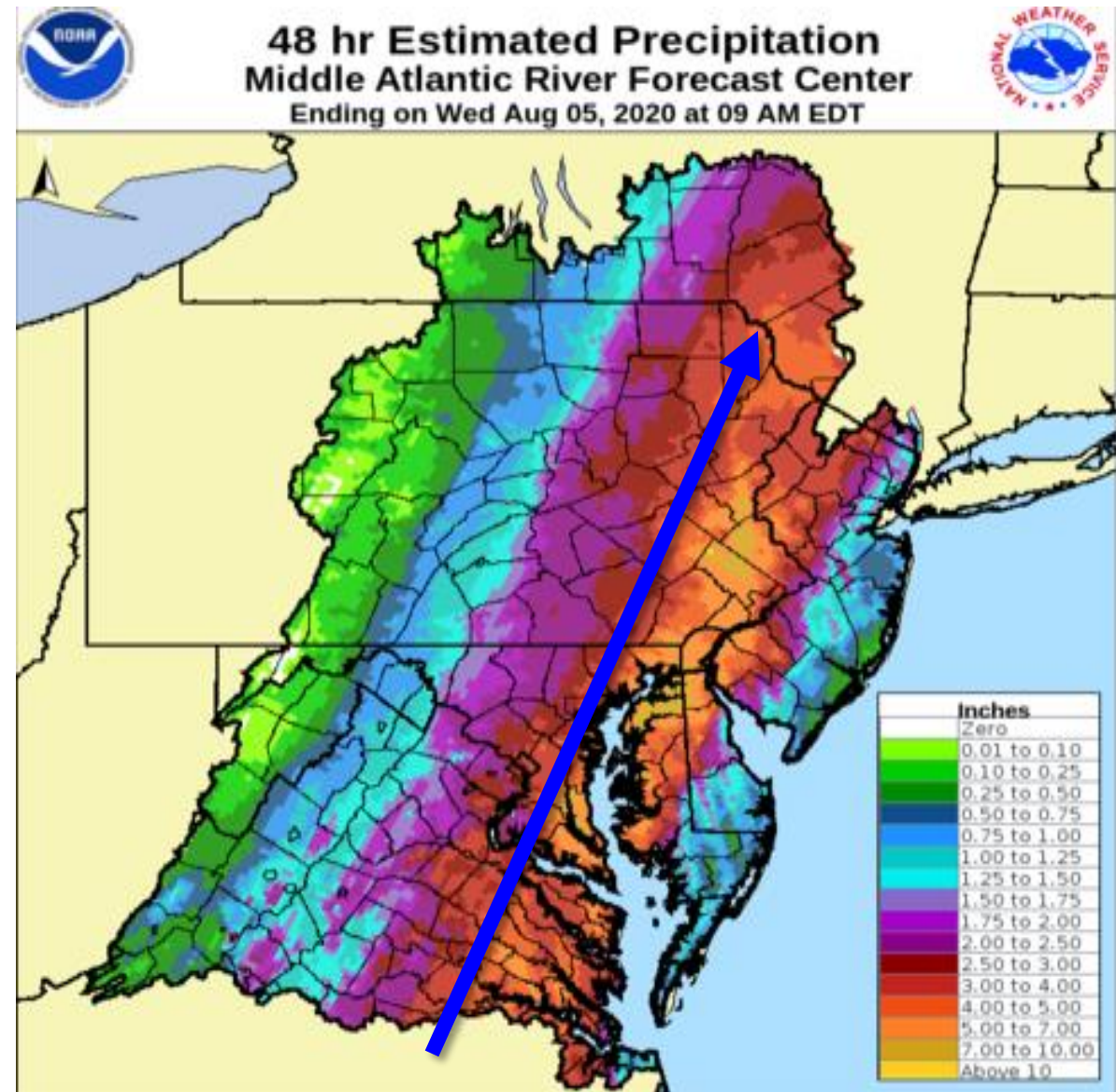
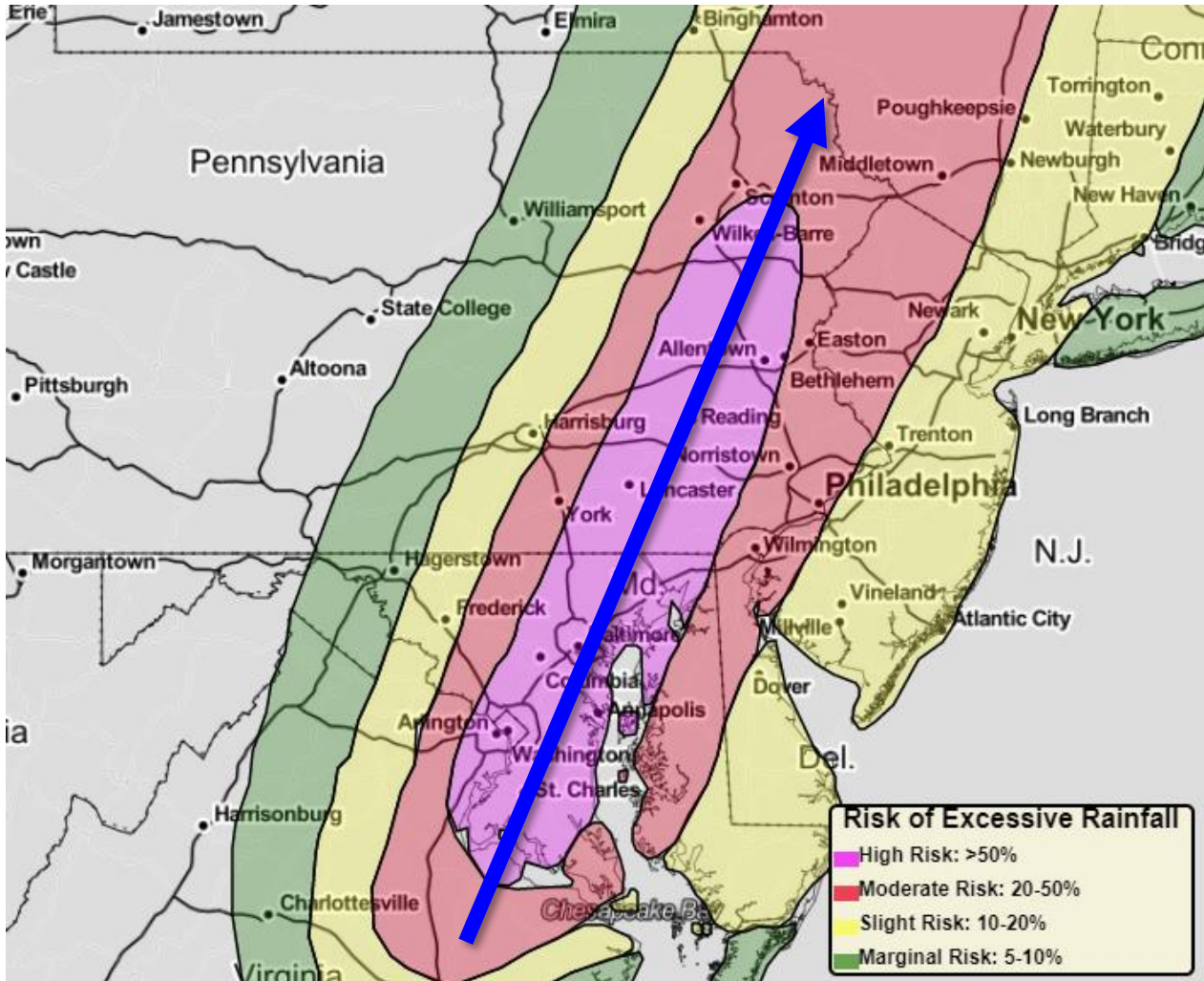


Created:
08/05/2020 02:12AM

mental product. Care should be taken in using the data. Unofficial observations are plotted. Values at interpolated locations may not represent actual precipitation totals at that location.

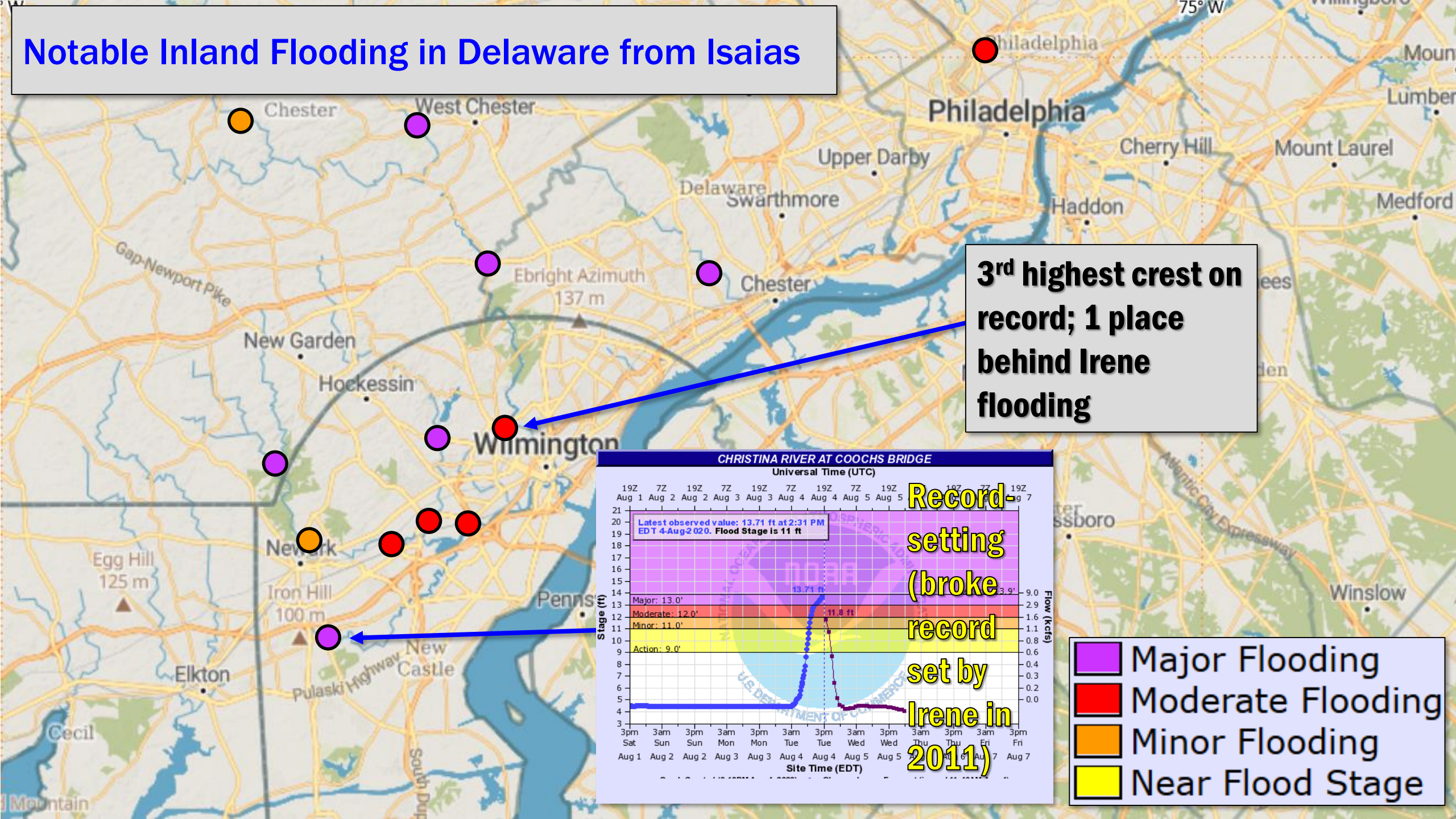
Isaias Excessive Rainfall Outlook

(issued morning of Aug. 4)

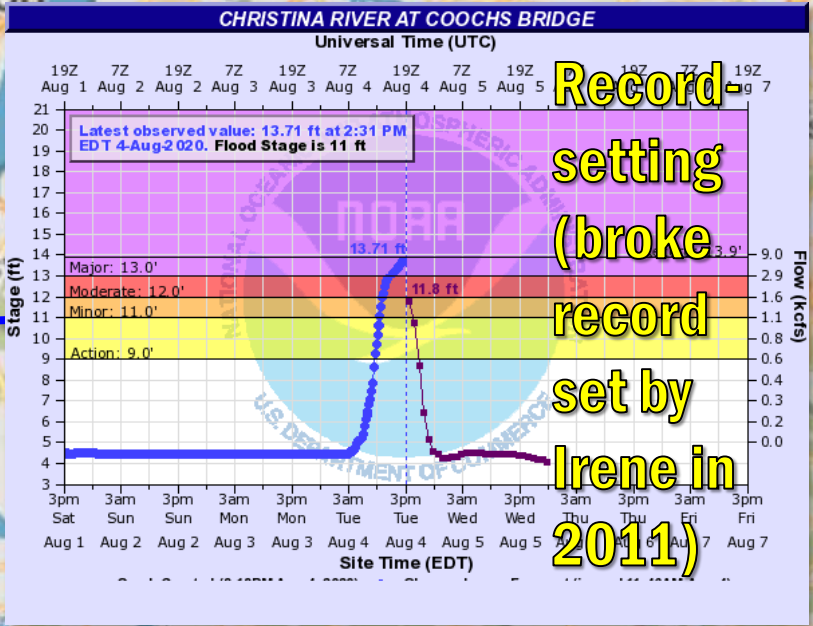


Big Takeaway: locations in the Moderate Risk areas should be prepared for High Risk-level impact, especially given the track uncertainty with weaker tropical systems.

Notable Inland Flooding in Delaware from Isaias



3rd highest crest on record; 1 place behind Irene flooding



- Major Flooding
- Moderate Flooding
- Minor Flooding
- Near Flood Stage



Thompson Bridge Rd. in New Castle, Co.



Christina River in Newark



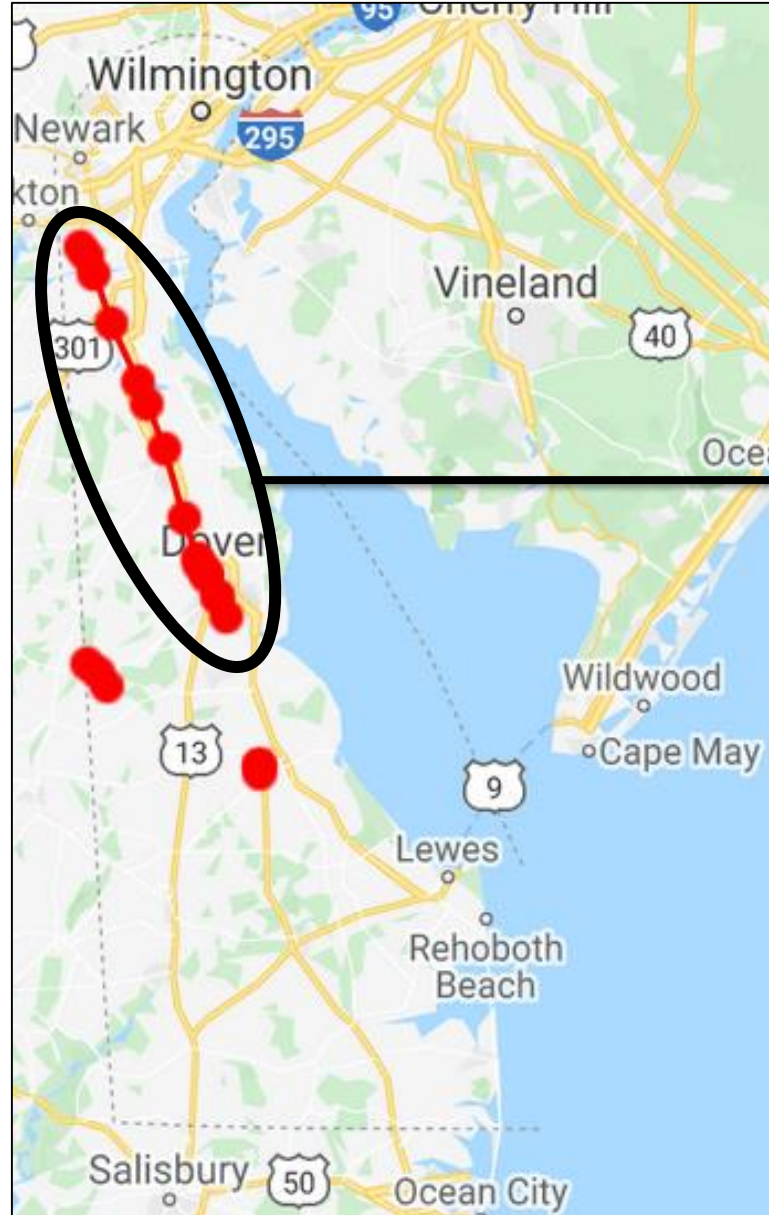
Hockessin

Isaias Inland Flooding in Delaware

Photos courtesy of DeIDOT, Josh Shannon/Newark Post, and Hockessin Fire Co.

Isaias Tornadoes in Delaware

- 3 confirmed tornadoes in DE.
- The Kent Co. – New Castle Co. Tornado rated an EF2 (EF2+ = “Significant”)
 - Track length was 35 mi. (longest track in DE history; prev. record was 18 mi. in 1988)
- Sandtown Tornado rated EF1
- Milford Tornado rated EF1



DESTRUCTION IN DELAWARE

An EF1 tornado, with a maximum wind speed of 105 mph and maximum path width of 200 yards, traveled 20.2 miles in Kent and New Castle counties Tuesday.

Between Mount Pleasant and Glasgow
The tornado is believed to have dissipated in this area, but the tornadoes were gone into Cecil County, Maryland.

Brennan Estates
9:24 a.m.: Cassandra and James Boyd leave their breakfast unfinished on the table to head to their basement when alarms go off on their phones. They lose their roof.

Summit Bridge Farms
9:20 a.m. - 9:25 a.m.: Dorri and Steve Pursel's two teenage sons are upstairs when part of an upstairs wall is ripped off. The family also loses part of their roof.

Parkside
Homes are damaged in this neighborhood. Some roof material and siding is blown off homes, and several garage doors are blown out. The side wall of one home is entirely blown out.

MIDDLETOWN
Estates at Dove Run
9:20 a.m.: Bernardo Traber's garage door is ripped off and a large window is blown in.

C-Line Stables
9:09 - 9:20 a.m.: Tornado tears children and horses as it tears parts of roof off stable.

Blackbird Landing Road
Trees are snapped or uprooted, and some roofs are damaged. The garage of a home is destroyed.

Gum Bush Road
Trees are snapped or uprooted, and some roofs are damaged.

Helen's Sausage House
9:09 a.m.: Tornado topples huge nearby tree at its base.

DELAWARE DEPARTMENT OF TRANSPORTATION WEATHER STATION
A 56-mph wind gust is recorded.

Corn in the field bordering the Childs' home on Black Diamond Road north of Smyrna is left flattened Friday by the tornado.

William Henry Middle School and nearby warehouse
Sections of the school's roof are blown off, and sections of the metal walls of the warehouse are torn off. A couple tractor-trailers also are flipped on their side.

Westview Terrace
9:55-9 a.m.: A tree crashes into the back of Helen Foreman's house.

Dyer's Tree Farm
A garage receives heavy damage.

Veronica Foreman stands in the doorway of the Westview Terrace home where she lives with her grandmother, Helen. She was at work when storms hit the area.

Power lines hung in the street and broken trees dotted yards on Division Street in Dover after storms blew through on Tuesday.



Reconstruction worker Jonathan Topal, left, stands with James and Cassandra Boyd outside the Boyds' home in Brennan Estates on Friday after a tornado ripped off their roof.



Tim Burroughs stands on the trunk of a nearly-70-foot-tall pin oak tree that was knocked down.



A volunteer helps clear debris at C-Line Stables near Townsend on Friday after Tropical Storm Isaias brought a tornado that swept from Dover to Glasgow on Tuesday.



William Henry Middle School and nearby warehouse



Westview Terrace



Veronica Foreman stands in the doorway of the Westview Terrace home where she lives with her grandmother, Helen. She was at work when storms hit the area.



Power lines hung in the street and broken trees dotted yards on Division Street in Dover after storms blew through on Tuesday.

Tornado

Continued from Page 3A

The tornado crossed their driveway, where it slammed a car into the garage, leaving the metal door buckled. It toppled Childs, drywall falling on him. He had to crawl toward his living room from a door that led to the garage.

The twister started an in-ground pool outside their home, shattered a fence and then "lifted up," Childs said, before collapsing seven very tall pine trees bordering his property and a neighbor's. After rising to their feet, Childs, his wife and 40-year-old mother-in-law were uninjured, but part of the roof and some of the walls were gone as the Childs' master bedroom on the second floor, a large wooden bed frame sat in the corner.

The pool was full of patio furniture and glass. The wall it once rested against was gone, with large and jagged pieces of the roof and ceiling resting on it or dangling above it.

Her bedroom set's over 100 years old. Childs said, "We thought that when we were slating. Right there is the bed I lay in. If it had been nighttime, I don't know what would have happened. All I know is, the beds weren't stacked out because I think what fell on it kept it from being sucked out."

What did get blown out of the room were five rings, including Anne's wedding band and engagement ring, that she kept on a nightstand.

Four were found, including the previous wedding and engagement rings, when family members and friends launched a search in the yard outside later.

Between 9:10 and 9:20 a.m., 25:00 after touch down

The sounds came first, and it was not just heavy wind and steady rain.

"I heard screaming," said Calotts Cline, who operates Townsend's C-Line Stables, a 66-acre facility that provides riding lessons, equestrian competition, a therapeutic center and boarding for horses.

Cline was in the center's grooming area, a large rectangular building attached to the stables. There were 50 horses on the grounds Tuesday morning, including three in the stables enjoying their breakfast, when the tornado appeared out of nowhere and the screams of children followed.

Cline and another adult gathered three students and the five huddled together on the floor in the stable, near a door and close to the entrance to the grooming area. There, large sections of the corrugated metal roof were being flung into the gray sky and rain was pouring onto the floor, creating muddy pools.

"We all sat down right in this little corner, and we just hugged each other and just put our heads down and told the kids we would be OK," said Cline, who opened the century-old 1966. "We just made it, and I thank God for that truthfully."

Nobody was hurt and neither were any horses, except for one that suffered a small laceration.

"It was scary because the roof was just coming off so quickly," said Kaylee Yearnsley, 12, who was with Cline.

See TORNADO, Page 3A



Downed or snapped trees lie on cars and buildings and across the grounds of the Greens at Cedar Chase apartment complex in Dover after storms blew through.



Greens at Cedar Chase
9 a.m., inside a third-floor apartment, a resident, Grace, said she felt the building move when a tree fell.



Delaware Eye Care Center
Just before 9 a.m., Ryan Coon hears what sounds like a train while sitting in the office.

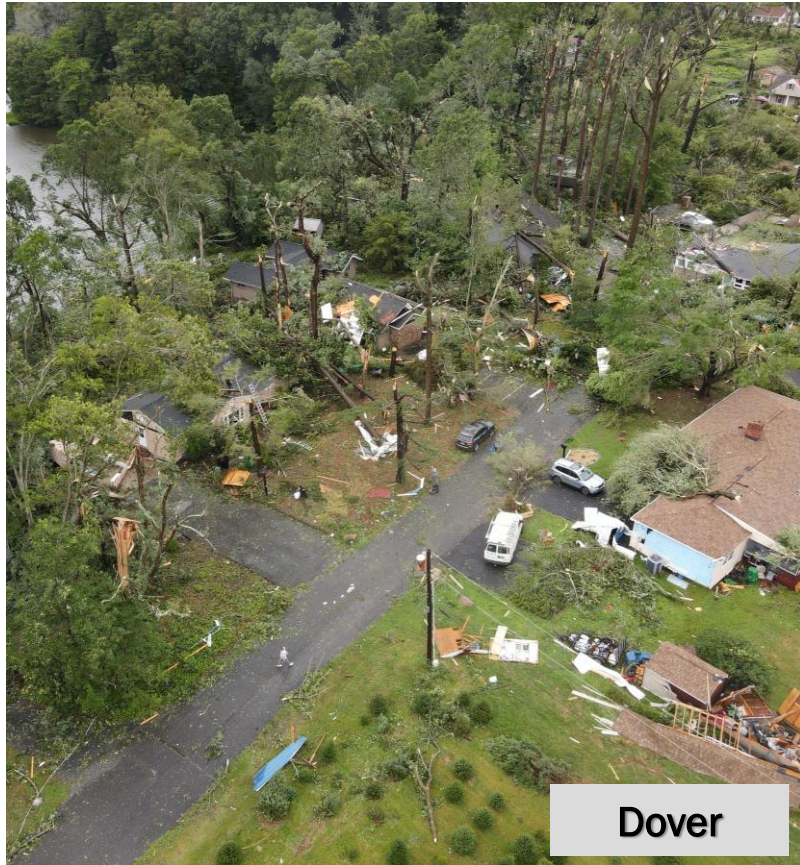


Poplar Lane to the neighborhood around Steele Road
Trees sustain significant damage.



Eagle Meadows Apartment Homes
8:55 a.m.: Tornado touches down near here.

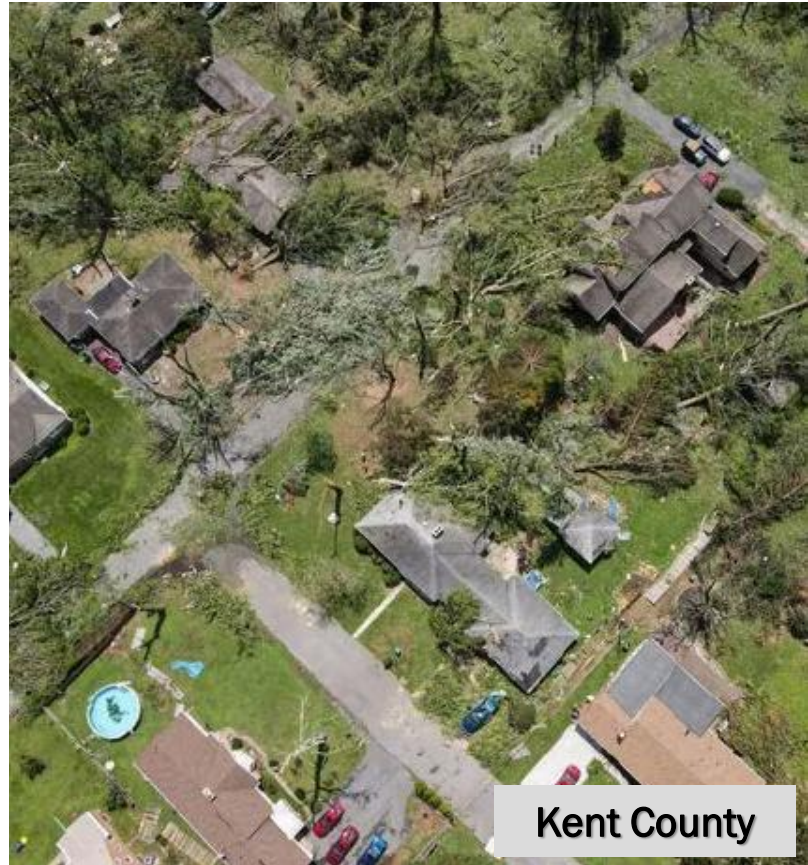
TAKE US/USA TODAY NETWORK/GETTY IMAGES SOURCE: NATIONAL WEATHER SERVICE AND NEWS JOURNAL REPORTING



Dover



Dover



Kent County



Middletown

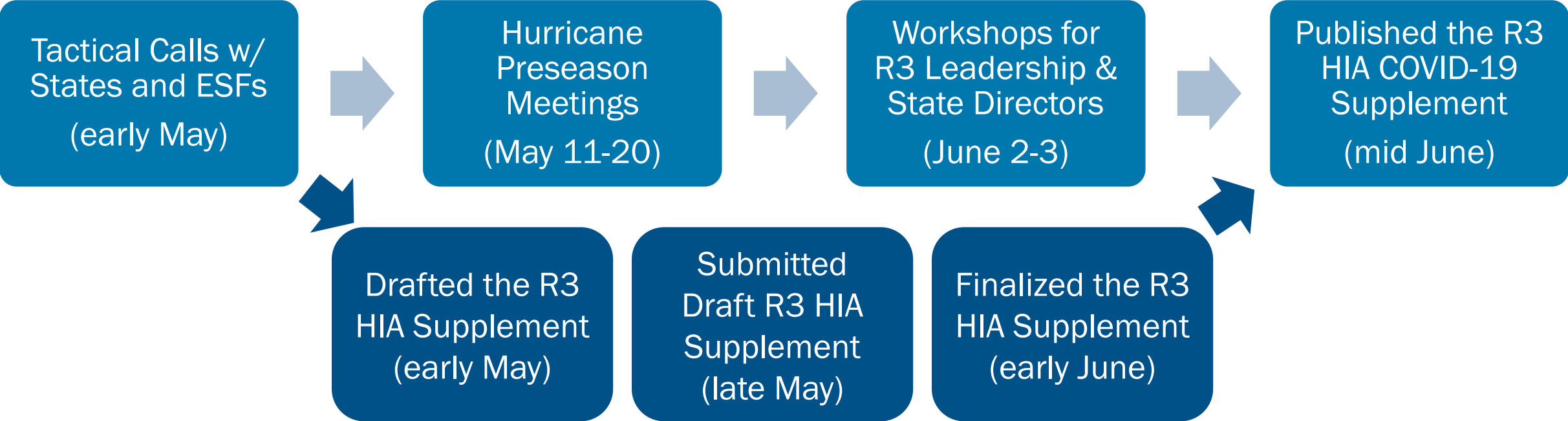


Kirkwood

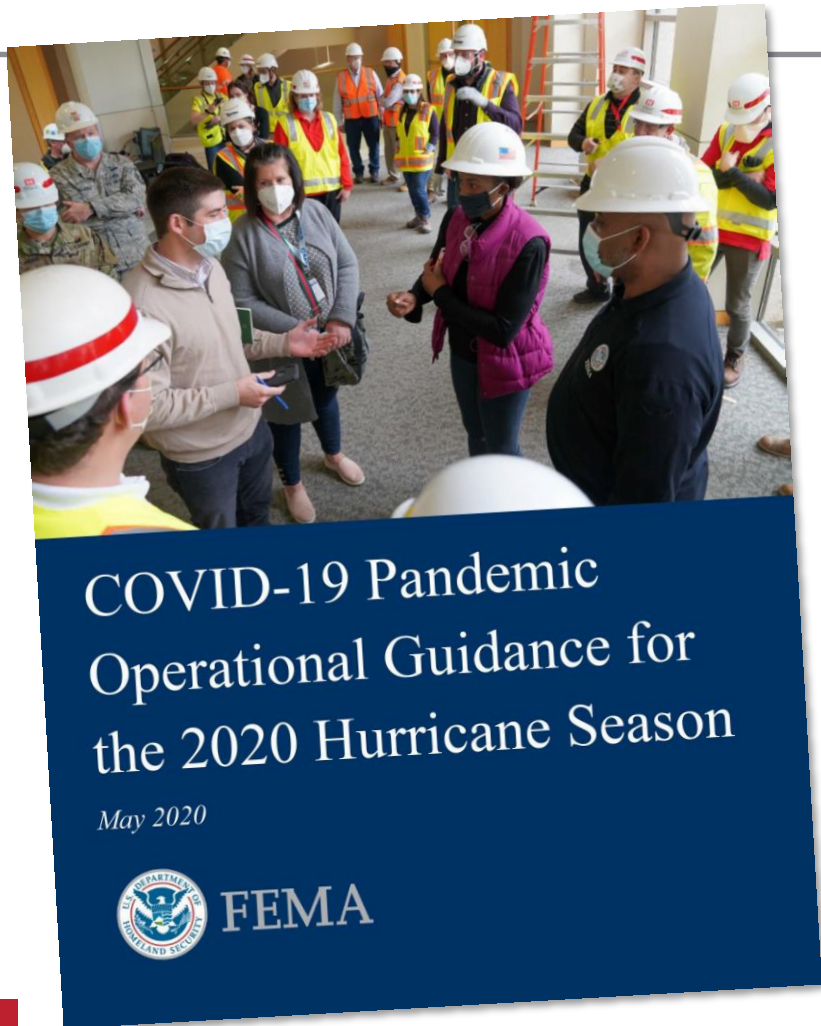
Isaias Tornadoes in Delaware

Photos courtesy of DEMA, 6ABC Philadelphia, and Matthew Blanchfield

Region 3 Hurricane-COVID Planning Timeline



COVID-Hurricane Operational Guidance from FEMA HQ



- Published in May 2020
- Describes anticipated challenges to disaster operations posed by COVID-19;
- Highlights planning considerations for emergency managers based on current challenges;
- Outlines how FEMA plans to adapt response and recovery operations;
- Includes guidance, checklists and resources to support emergency managers response and recovery planning.
- **The COVID-19 Supplement to the Region 3 Hurricane Incident Annex complements this guidance.**



COVID-19 Impact on R3 Hurricane Planning

- Sheltering and transporting evacuees more complicated.
- Both congregate and non-congregate sheltering options being explored.
- Evacuation of hospitals and other facilities may be more complicated this year and take longer.
- The sharing of resources between impacted and non-impacted States may be limited this year, given that nearly all States still may be in response mode one way or another.
- Public messaging will be critical.
- **We need to be prepared for COVID-19 to still be a threat during the 2021 hurricane season.**



Tropical Cyclone Names for the 2021 Atlantic Season

Ana

Bill

Claudette

Danny

Elsa

Fred

Grace

Henri

Ida

Julian

Kate

Larry

Mindy

Nicholas

Odette

Peter

Rose


Sam

Teresa

Victor

Wanda



The logo consists of the letters 'H', 'L', and 'T' in a stylized, blocky font. The 'H' and 'T' are white with red outlines, while the 'L' is solid black. They are set against a red background.

13 Days until the end of the
2020 Hurricane Season

195 Days until the start of the
2021 Hurricane Season

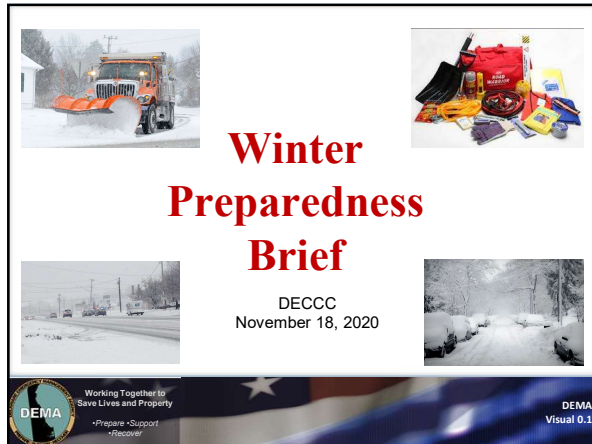
Mike Bilder

Hurricane Program Manager / HLT Lead
FEMA Region 3

cell: (267) 738-9463

Blue Sky: michael.bilder@fema.dhs.gov

Dark Sky: HLT@fema.dhs.gov



Winter Preparedness Brief

DECCC
November 18, 2020

Working Together to Save Lives and Property
• Prepare • Support • Recover

DEMA Visual 0.1

1

Winter Preparedness

- Winter Storm Effects
- NWS Weather Definitions
- Driving Restrictions
- Preparedness tips
- Helpful Sites

Working Together to Save Lives and Property
• Prepare • Support • Recover

DEMA Visual 0.2

2

Winter Storm

- A Winter Storm is a combination of winter precipitation with an impact of hazardous conditions.
- The main hazards associated with winter storms are: High winds, freezing rain or sleet, heavy snowfall, and dangerously cold temperatures.
- Winter storms can create impassable roadways, loss of utilities and services, property damage, and disruption of business/economy.

Working Together to Save Lives and Property
• Prepare • Support • Recover

DEMA Visual 0.3

3

NWS Winter Weather Definitions

- **Advisory:** Conditions are expected which could impact travel and other activities. If caution is used, should not be life threatening
- **Watch:** Issued when significant winter precipitation is possible within 24 to 48 hours. Alert of hazardous winter weather could occur. Issued for winter storms, heavy snow or blizzards.

Working Together to Save Lives and Property
• Prepare • Support • Recover

DEMA Visual 0.4

4

Definitions Cont.

- **Warning:** Issued when winter precipitation could lead to a threat to life or property. Indicators: 4+ inches of snow is expected in the next 12 hours; 6+ inches of snow in the next 24 hours, or ¼ inch+ of ice accumulation is expected. The most serious winter weather message – take action!
- **Blizzard Warning:** Sustained wind speeds of at least 35 MPH are accompanied by considerable falling and/or blowing snow. Driving conditions become extremely difficult and dangerous.

Working Together to Save Lives and Property
• Prepare • Support • Recover

DEMA Visual 0.5

5

Definitions Cont.

- **Wind Chill:** Increased wind speeds accelerate heat loss from exposed skin

	Temperature (°F)																	
	40	35	30	25	20	15	10	5	0	-5	-10	-15	-20	-25	-30	-35	-40	-45
5	36	31	25	19	13	7	1	-5	-11	-16	-22	-28	-34	-40	-46	-52	-57	-63
10	34	27	21	15	9	3	-4	-10	-16	-22	-28	-35	-41	-47	-53	-59	-66	-72
15	32	25	19	13	6	0	-7	-13	-19	-26	-32	-39	-45	-51	-58	-64	-71	-77
20	30	24	17	11	4	-2	-9	-15	-22	-29	-35	-42	-48	-55	-61	-68	-74	-81
25	29	23	16	9	3	-4	-11	-17	-24	-31	-37	-44	-51	-58	-64	-71	-78	-84
30	28	22	15	8	1	-5	-12	-19	-26	-33	-39	-46	-53	-60	-67	-73	-80	-87
35	28	21	14	7	0	-7	-14	-21	-27	-34	-41	-48	-55	-62	-69	-76	-82	-89
40	27	20	13	6	-1	-8	-15	-22	-29	-36	-43	-50	-57	-64	-71	-78	-84	-91
45	26	19	12	5	-2	-9	-16	-23	-30	-37	-44	-51	-58	-65	-72	-79	-86	-93
50	26	19	12	4	-3	-10	-17	-24	-31	-38	-45	-52	-60	-67	-74	-81	-88	-95
55	25	18	11	4	-3	-11	-18	-25	-32	-39	-46	-54	-61	-68	-75	-82	-89	-97
60	25	17	10	3	-4	-11	-18	-26	-33	-40	-48	-55	-62	-69	-76	-84	-91	-98

Frostbite Times: ■ 30 minutes ■ 10 minutes ■ 5 minutes
Wind Chill (°F) = 35.74 + 0.6215T - 35.75(V^{0.16}) + 0.4275T(V^{0.16})
Where: T = Air Temperature (°F); V = Wind Speed (mph) (Effective 11/8/14)


Working Together to Save Lives and Property
• Prepare • Support • Recover

DEMA Visual 0.6

6

<https://youtu.be/-srUpzCmBrM>


Check out the above link for humorous take on winter driving.



7

Driving Restrictions/Waiver

- 20 Delaware Code, Section 3116; The Governor or a designee may implement driving restrictions during a state of emergency
- Applies to use/operation of motor vehicles on Delaware roads to include highways, roadways, and private roads
- Separate levels may be issued throughout the State based on severity of conditions in given areas



8

Driving Restrictions


- Level I Driving Warning – Persons operating a motor vehicle shall exercise extra caution.
- Level II Driving Restriction – Driving is restricted to essential personnel and individuals with driving waivers due to safety, health, or business necessity.
- Level III Driving Ban – Driving is restricted to those designated as first responders and essential personnel only. **Driving waivers does not apply**



9

Winter Preparedness/Safety

- Winterize home
- Have heating system checked and chimney cleaned/inspected
- Fuel for alternate heat source(s)
- Bottled water, non-perishable food, batteries
- Fire extinguisher if portable heating units are used
- Be aware of dangers of Carbon Monoxide
- Clear snow from intake/exhaust vents
- Avoid overexertion when shoveling snow



10

Winter Preparedness/Safety Cont.


- Vehicle maint; tires, anti-freeze, windshield washer
- Keep gas tank above half; prevents ice in fuel line
- Have emergency supplies in vehicle if traveling:
Warm clothes, boots, shovel, sand
- If you become stranded; turn on flashers, run engine intermittently to stay warm
- **“Make a Plan – Make a Kit”**




11

Helpful Websites

- PrepareDE - <https://www.preparede.org/>
- FEMA Ready - <https://www.ready.gov/>
- NWS Winter Storms Pamphlet - [https://www.weather.gov/media/safety/Winter Storms2008.pdf](https://www.weather.gov/media/safety/Winter_Storms2008.pdf)
- Mt Holly NWS - <https://www.weather.gov/phi/>
- Driving Restrictions - <https://dema.delaware.gov/drivingRestrictions/index.shtml>
- DEMA - <https://dema.delaware.gov/>



12

<https://www.youtube.com/watch?v=wkDvqQKGgD>

A



13

Questions

Q: What is the difference of between Essential personal and Mission Critical personnel (or COOP Essential)?

A: State assigned Essential Personnel are permitted and expected to drive during the Level II driving ban. This status is set by DHR and cannot be changed the individual organizations. COOP Essential personal are those people that are designated as employees that perform processes that are a priority to an organization. These employees are NOT permitted to drive during the ban unless they are also State Essential personnel.



14

Questions

Comment

Another item to consider in winter preparations, is battery back-ups for internet routers. With many state employees working remotely, concerns regarding reporting to an office (travel in bad weather) will instead be replaced with employees whose bandwidth may be interrupted due to storms. This should be considered when evaluating your COOP plans and determining which employees are likely to be impacted by such events and the repercussions.



15

Thank You

Edward "Tony" Lee
Delaware Emergency Management Agency (DEMA)
Principal Planner

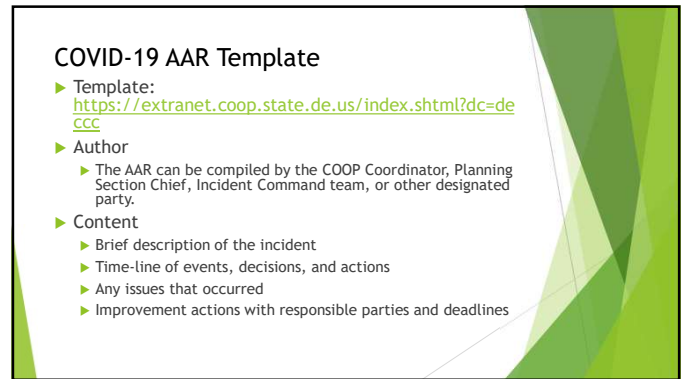
(302) 659-2219
Edward.lee@delaware.gov



16



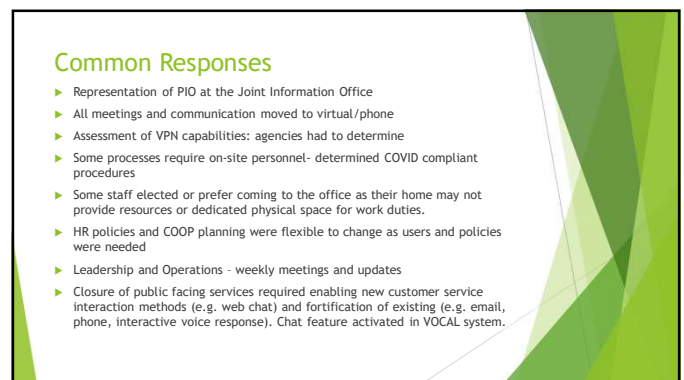
1



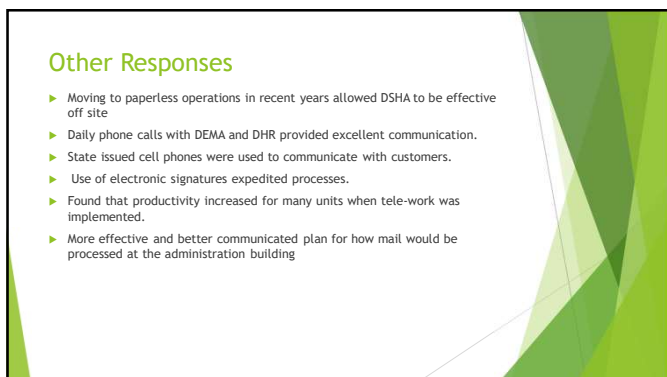
2



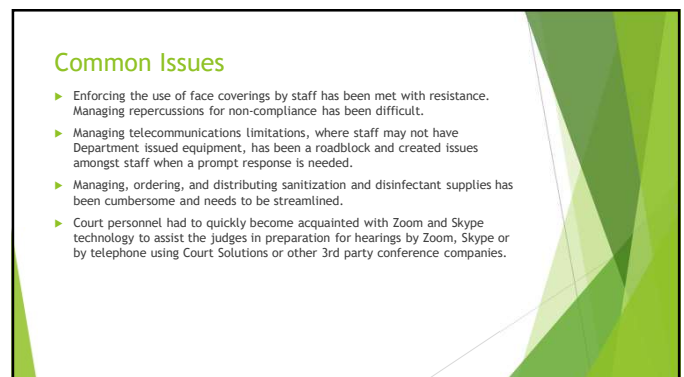
3



4



5



6

Best Response Suggestions

- ▶ Establish point person(s) and process to ensure consistent and timely messaging from upper management to section managers
- ▶ Common and consistent activity logging by staff for section managers to adequately review performance.
- ▶ Develop a position specific break-out of who can or cannot telecommute in the event of a disaster so that everyone understands prior to an incident occurring.
- ▶ DOE made how to documents, to help with applications not needed for VPN access
- ▶ Conduct more drills vs. tabletops so leadership and employees have a better understanding of response/recovery capabilities.

7

Open Discussion/Questions

8

Additional Resources

- ▶ [Fact+Sheet_Covid 19](#)
- ▶ [Return to work safely Presentation](#)
- ▶ [Covid-19 Best Practices for Businesses in Delaware](#)
- ▶ de.gov/healthycommunity
- ▶ <https://governor.delaware.gov/delawares-recovery/>

9